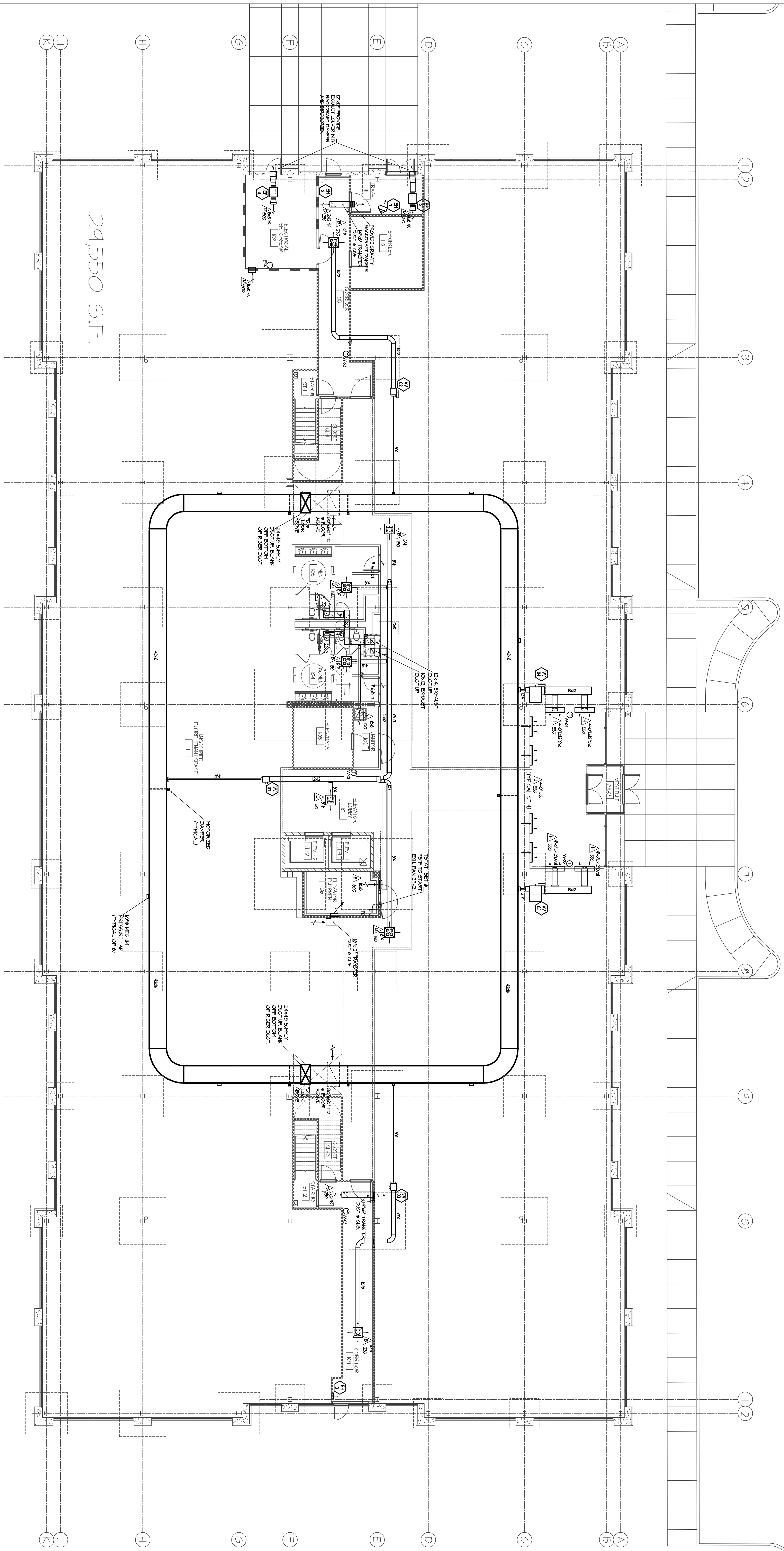


SYMBOL	DESCRIPTION	SYMBOL	DESCRIPTION
	LOW PRESSURE SUPPLY DUCT (DOUBLE LINE)		RETURN DUCT
	MEDIUM PRESSURE SUPPLY DUCT (DOUBLE LINE)		RETURN DUCT WITH REGISTER
	LOW PRESSURE SUPPLY DUCT WITH REGISTER		RETURN DUCT WITH DAMPER
	MEDIUM PRESSURE SUPPLY DUCT WITH REGISTER		RETURN DUCT WITH DAMPER AND REGISTER
	RETURN EXHAUST DUCT		RETURN EXHAUST DUCT WITH DAMPER
	RETURN EXHAUST DUCT WITH REGISTER		RETURN EXHAUST DUCT WITH DAMPER AND REGISTER
	RETURN EXHAUST DUCT WITH DAMPER AND REGISTER		RETURN EXHAUST DUCT WITH DAMPER AND REGISTER AND DAMPER

MECHANICAL LEGEND	SYMBOL	DESCRIPTION
	Supply Diffuser	
	Return Diffuser	
	Return Exhaust Register/Grille	
	Supply/Return Diffuser or Register Tag	
	Temperature Controller w/ Equipment Tag	
	Manual Volume Damper	
	Door Louver	
	Manual Volume Damper Rating as Required by Code	
	Motorized Damper	

MECHANICAL LEGEND	SYMBOL	DESCRIPTION
	Note: Provide all necessary accessories for air conditioning, heating, and cooling.	
	Note: Provide all necessary accessories for air conditioning, heating, and cooling, including balancing.	

MECHANICAL LEGEND	SYMBOL	DESCRIPTION
	Note: Provide all necessary accessories for air conditioning, heating, and cooling, including balancing, as shown in the diagram.	



120 HARVESTER DRIVE
THREE STORY OFFICE (SHELL) BUILDING
N.E. CORNER OF HARVESTER DRIVE & FRONTAGE ROAD, BURR RIDGE, ILLINOIS
A DEVELOPMENT FOR MARS EQUITIES, INC.

consulting engineers for the construction industry
Wm. J. Hoekstra Engineers, Inc.
HEATING AIR-CONDITIONING PLUMBING ELECTRICAL
5600 West 120th Street Alsip, IL 60803
(708) 381-8588 Fax (708) 381-8333

No.	DATE	REVISION DESCRIPTION
1	5/31/08	FOR PERMITS

No.	DATE	REVISION DESCRIPTION

No.	DATE	REVISION DESCRIPTION

DATE	JOB NUMBER	SHEET NO.
		M101

